

## HANGER LANE GYRATORY UNDERPASS

**Project:** HANGER LANE GYRATORY UNDERPASS

**Client:** Transport For London

**Survey Date:** September 2012

### Background

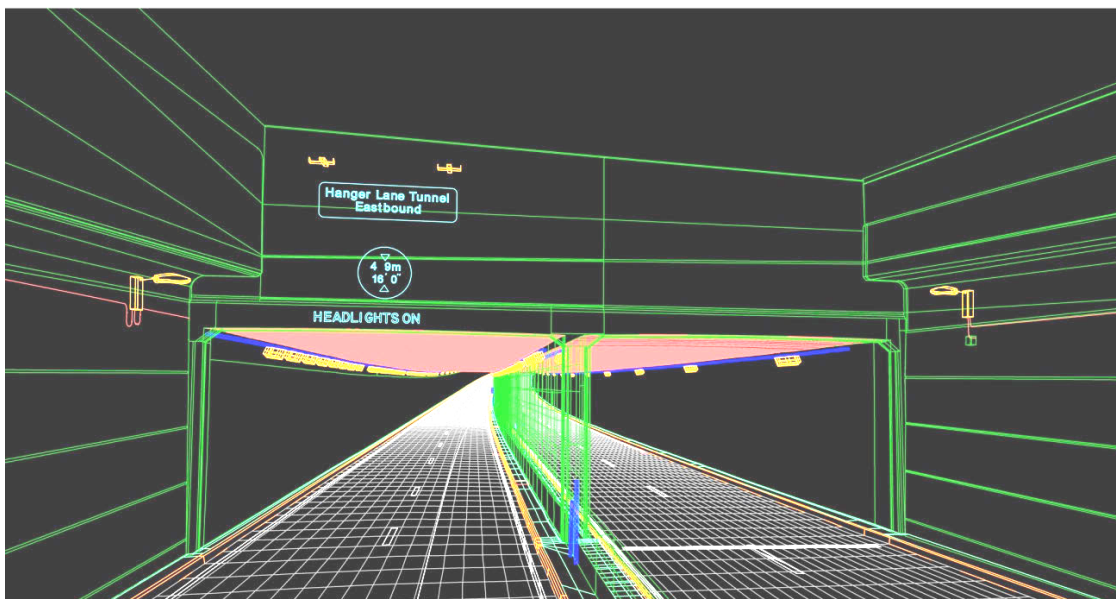
### Survey Brief

J.C.White Geomatics Ltd. were commissioned to provide 3D laser scan data and an accurate 3D model of the underpass to ascertain height restrictions and for proposed refurbishment of the lighting.

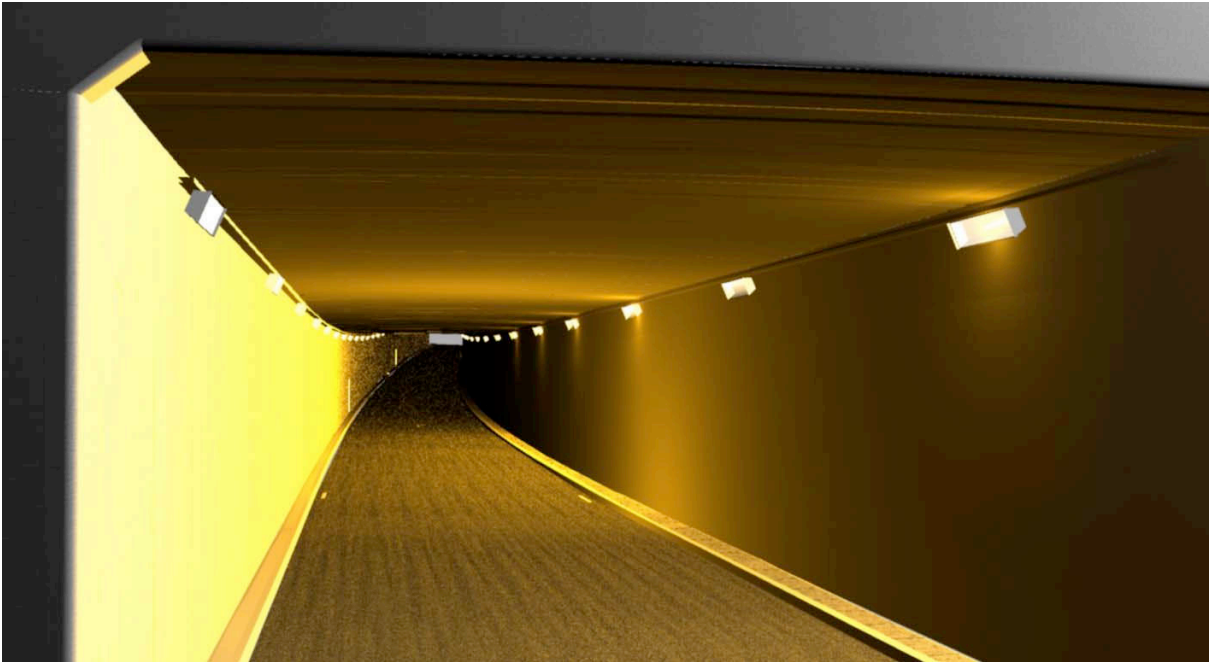
### Survey Methodology



The survey was carried out over two nighttime possessions which included fully controlling the scans and referencing the information to O.S. grid and datum.



The 3D model was constructed entirely from the pointcloud data and QA checks indicated a sub 5mm fit throughout. A 2D drawing was also extracted from the 3D model for traditional plan production.



Rendered lighting applied to model.

